



Greville House, Kinnerton Street,  
Belgravia, SW1X

Asking Price £2,150,000, Leasehold - Share of Freehold

NAPIER WATT

T: 0207 935 0011  
E: [enquiries@napierwatt.co.uk](mailto:enquiries@napierwatt.co.uk)  
W: [napierwatt.co.uk](http://napierwatt.co.uk)

35 Berkeley Square, Mayfair, London, W1J 5BF







## Description

A particularly bright three bedroom flat on the first floor of this modern apartment block. The apartment has recently been immaculately refurbished to a high specification. Situated in the heart of Belgravia, the flat is conveniently positioned close to the local amenities of Motcomb Street and the international shops and restaurants of Sloane Street and Knightsbridge.

Entrance Hall : 3 Bedrooms : 2 Bathrooms : 1 Reception : Newly Renovated Common Parts : 2 Lifts : Day Porter

## Key Features

- SHARE OF FREEHOLD
- LEASE 987 YEARS
- LARGE MODERN LIFTS
- FIRST FLOOR
- DAY PORTER
- NEXT TO TRENDY MOTCOMB STREET

## Terms

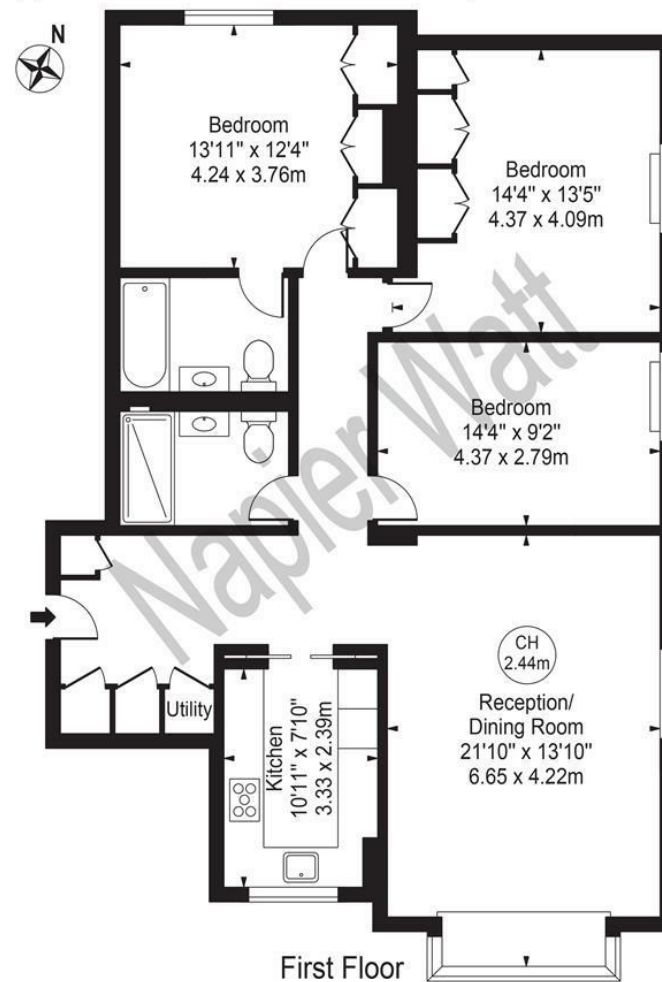
LEASEHOLD WITH SHARE OF FREEHOLD 987 YEARS

Service Charge £8,205.26 pa

Council Tax Westminster Band H

## Greville House

Approx. Gross Internal Area 1199 Sq Ft - 111.39 Sq M



For Illustration Purposes Only - Not To Scale

This floor plan should be used as a general outline for guidance only and does not constitute in whole or in part an offer or contract. Any intending purchaser or lessee should satisfy themselves by inspection, searches, enquiries and full survey as to the correctness of each statement. Any areas, measurements or distances quoted are approximate and should not be used to value a property or be the basis of any sale or let.

IMPORTANT: We would inform prospective purchasers that these sales particulars have been prepared as a general guide only. A detailed survey has not been carried out, nor the services, appliances and fittings tested. Room sizes should not be relied upon for furnishing purposes and are approximate. If floor plans are included, they are for guidance only and illustration purposes only and may not be to scale. If there are any important matters likely to affect your decision to buy, please contact us before viewing the property.